

LIQUID ENDOWMENT MODEL

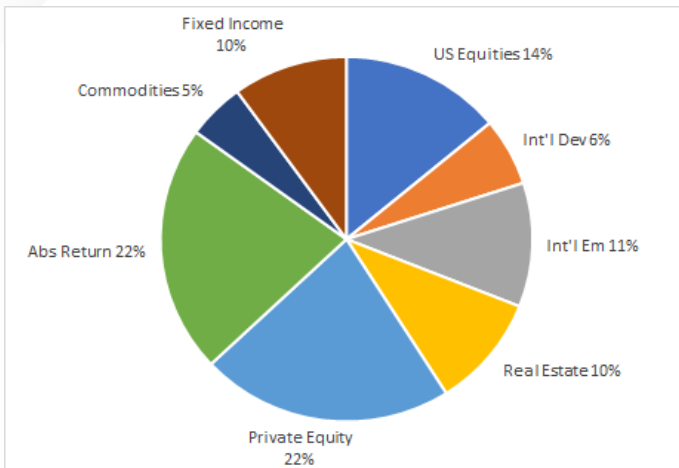


What: The Liquid Endowment Model seeks to approximate the investment strategies and asset allocation policies of traditional endowment funds through the use of liquid securities in the traditional and alternative asset classes.

Why: Through the use of low-correlated asset classes, the Liquid Endowment Model seeks capital appreciation through various market cycles by providing portfolio exposure outside of stocks and bonds.

How: The Liquid Endowment Model uses an SMA format, providing flexibility and control for the advisor and client through client ownership of each stock, ETF, and mutual fund.

ASSET ALLOCATION



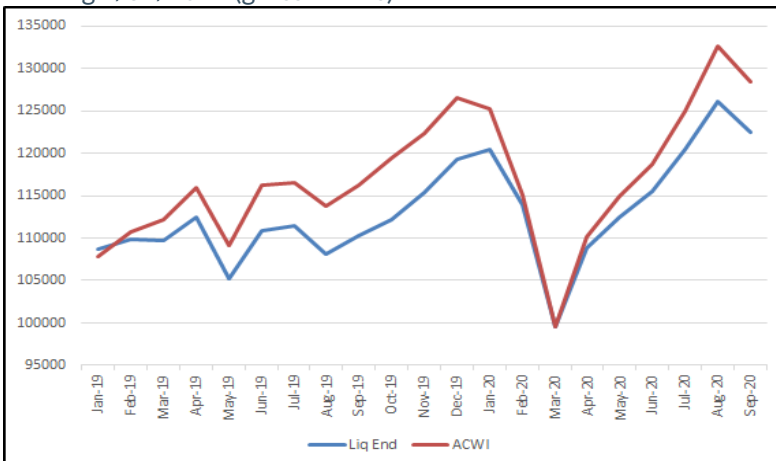
PERFORMANCE

(% as of 9/30/2020 gross of fees)

	YTD	1-Year	Since Inception
Liquid Endowment	(0.77)	7.37	10.15
MSCI ACWI	1.77	11.00	N/A

GROWTH OF \$100,000 SINCE INCEPTION

Ending 9/30/2020 (gross of fees)



PORTFOLIO PROFILE

OUR STORY

As a part of Wildermuth Advisory, Wildermuth Asset Management has been a leader in creating portfolios within the Endowment Model philosophy for twenty years. Our diverse roster of SMAs provides advisors and their clients innovative options for their portfolios.

OPERATIONS

Manager: Daniel Wildermuth
Min. Inv. \$50,000
Contact: Erik Setterlind
 esetterlind@wildermutham.com
 888/356-1950
 www.wildermuthasset.com

MANAGER BIOGRAPHY

Daniel Wildermuth is the founder and CEO Kalos Capital, a broker/dealer and CIO of Wildermuth Asset Management, a money management firm. He has authored two well-received financial books: "Wise Money: Minimize Your Volatility and Increase Your Control," and "How to Keep and Grow Retirement Assets." Published by McGraw-Hill in 2012 and 2013, respectively. Mr. Wildermuth earned an MBA in Finance from Anderson School at UCLA and an undergraduate degree in engineering from Stanford University.

TOP 10 HOLDINGS²

(As of 9/30/2020)

- ALPS Listed Private Equity
- Catalyst Millburn Hedge Strategy
- Leland Thomson Reuters Venture Cap
- Locorr Long/Short Commodity
- iShares Core US Agg Bond
- Wisdom Tree China ex-State Owned
- iShares MSCI Sweden
- iShares MSCI South Korea
- Alphabet, Inc.
- Regeneron Pharmaceuticals

²It should not be assumed recommendations made in the future will be profitable or equal the performance of these securities. Holdings are subject to change and may not be representative of current or future investments.

WILDERMUTH ASSET MANAGEMENT LIQUID ENDOWMENT PORTFOLIO

The performance data quoted represents past performance. Past performance is not indicative of future results, and there can be no assurance, and clients should not assume, that future performance of any Wildermuth Asset Management managed portfolios will be comparable to their past performance. Investment returns and principal value will fluctuate, so that investors' shares, when sold, may be worth more or less than their original cost. Investing involves risk including possible loss of principal. Current performance may be lower or higher than the performance data cited.

The composite includes taxable and nontaxable, discretionary and nondiscretionary portfolios within wrapped or unwrapped accounts. The performance information presented has not been audited or verified by an independent accounting firm. The composite figures illustrated represent the returns only for the time periods indicated and reflect the reinvestment of dividends, interest and capital gains. Performance is time-weighted total return calculated quarterly. Performance data is shown both gross as well as net of all transaction, management, and custodial fees. The advisory fees used in the calculations are equal to the highest advisory fee charged to any client subscribing to the portfolios. From 2002 through first quarter 2006, the maximum fees possible were 1.5% annually, redeemed 0.375% quarterly, in advance, based on asset value as measured at the previous quarter-end. From second quarter 2006 through 2012, maximum fees possible were 1.95% annually, redeemed 0.488% quarterly, in advance, based upon asset value as measured at the previous quarter-end. From second quarter 2012, maximum fees possible were 2.70% annually, redeemed 0.675% quarterly, in advance, based upon asset value as measured at the previous quarter-end. Actual advisory fees varied among clients in the Wildermuth Asset Management. Wildermuth Asset Management's fee schedules are available in Form ADV, Part 2 or upon request.

Wildermuth Asset Management customizes some portfolios for clients according to various characteristics such as tax sensitivity, tax requirements, legacy position inclusion, stock ownership restrictions, sector restrictions, and stock substitutions. Furthermore, we may alter or customize the construction, implementation and ongoing holdings of portfolios depending upon unique or changing client, economic, investment vehicle or market circumstances.

Benchmark: The MSCI ACWI is a stock index that tracks about 3,000 stocks in 49 developed and emerging market countries, representing a total market capitalization of tens of trillions of dollars. The MSCI ACWI index is used as a benchmark for global equity funds and as a guide to asset allocation. This index may or not be the most representative benchmark index of a particular strategy. The index presented is a general proxy which individually or in combination may not be relevant to a specific model. It should not be assumed that your account holdings correspond directly to any comparative index. Indices are not investments, are unmanaged and do not incur fees or expenses. It is not possible to invest in the index itself.

Standard Deviation: A measurement of dispersion about an average, depicting how widely a stock or portfolio's returns varied over a certain period of time. When an investment or portfolio has a high standard deviation, the predicted range of performance is wide, and implies greater volatility.

Actual client results are also impacted by start and end dates, withdrawals, additional deposits, and any charges imposed by the investment custodian, which may materially affect client performance returns. In addition, Unified Managed Accounts (UMA) are not traded by Wildermuth Asset Management, which may result in differences in trading style, efficiency, and timing. Therefore, your return may be materially different from that of other Wildermuth Asset Management clients with the same investment objective and any comparative benchmark provided.

Asset allocation and diversification strategies do not protect against market risk or loss of principal. Neither do they assure a profit nor do they protect against losses in declining markets. Investments in managed portfolios have additional management fees and expose the investor to the risks inherent within the portfolio and the specific risks of the underlying securities directly proportionate to their allocation in the portfolio. Investing involves risk, including the loss of principal. Investment returns, particularly over shorter time periods, are highly dependent on trends in the various investment markets. Investors should consider the investment objectives, risks, charges and expenses of managed portfolios carefully before investing. There is no assurance that any investment or strategy will achieve its investment objective, and the information provided is not intended to be a complete analysis of every material fact respecting any strategy. An investor's actual results may have varied.

For current month-end performance figures, please contact Erik Setterlind at (888) 356-1950.

Wildermuth Asset Management is an independent, privately owned investment management firm registered with the Securities and Exchange Commission. Wildermuth Asset Management offers the management of separately managed accounts comprised of individual securities and asset allocation exchange traded fund portfolios to meet various client investment objectives. Wildermuth Asset Management has been registered as an investment advisor since August 2004. Prior to the formation of Wildermuth Asset Management, these and additional models and investment styles were employed by the same managers at Kalos Capital, Inc. a registered investment advisor since February 2001. Registration as an investment adviser does not imply a certain level of skill or training.

Downside Deviation: A measure of volatility using only negative rate of return data points.

Alpha: The return on an asset in excess of the asset's required rate of return.

Beta: The measure of an asset or portfolio's sensitivity to the market as a whole. A beta above 1 is more volatile than the market while a beta below 1 is less volatile.

R squared (R2): A statistical measure that represents the percentage of an investment portfolio's movements that can be explained by movements in a benchmark index.

Sharpe Ratio: The average return in excess of the risk free rate divided by the standard deviation of return. It is a measure of the average excess return earned per unit of standard deviation of return.

Sortino Ratio: A measure that subtracts the risk-free rate of return from the portfolio's return and then divides that by the downside deviation.

Investment Advisory Services offered through Wildermuth Asset Management, LLC, an SEC Registered Investment Advisor.

11525 Park Woods Circle | Alpharetta, GA 30005
Phone (678) 356-1100 | www.wildermuthasset.com

*The attached disclaimers are an integral part of the presentation.
This presentation may not be shown to clients without the disclaimer

